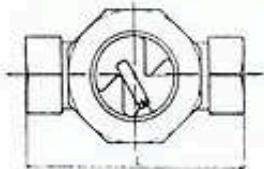


## DE-88 CI

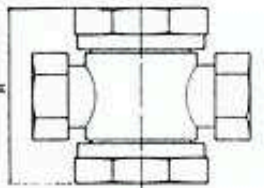
### SIGHT GLASS

CAST IRON FC-20

• SIZE: 1/2" Thru 2"

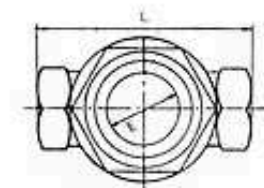


PART NAME	MATERIAL
BODY	CAST IRON
MAIN PART	BRONZE



W. P.	0.36-7 KG/CM <sup>2</sup>
W. T.	220°C

USAGE SCOPE:  
STEAM, GENERAL LIQUID



SIZE	L	E
1/2"	75	22
3/4"	90	30
1"	90	30
1 1/4"	120	42
1 1/2"	120	42
2"	140	53



SIZE NOMINAL	1/8 15A	1/4 20	1 25	1 1/4 32	1 1/2 40	2 50
L	120	120	138	145	145	145
H	100	100	105	135	135	145
KGS	1.8	1.8	2.2	3	3.2	3.6