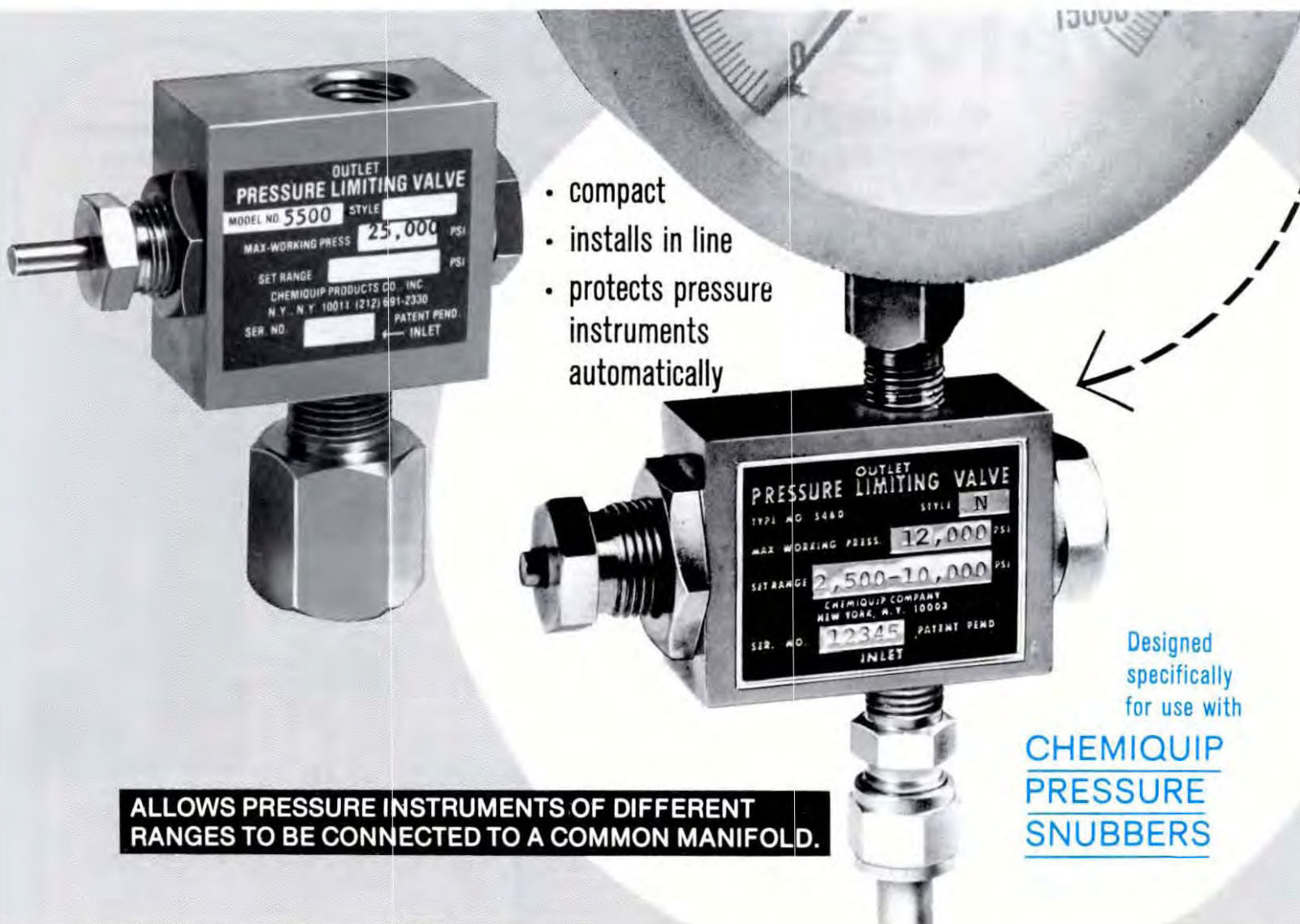


an advanced system for protection of pressure gauges and switches/CHEMIQUIP Pressure Limiting Valve



- compact
- installs in line
- protects pressure instruments automatically

Designed specifically for use with

**CHEMIQUIP
PRESSURE
SNUBBERS**

ALLOWS PRESSURE INSTRUMENTS OF DIFFERENT RANGES TO BE CONNECTED TO A COMMON MANIFOLD.

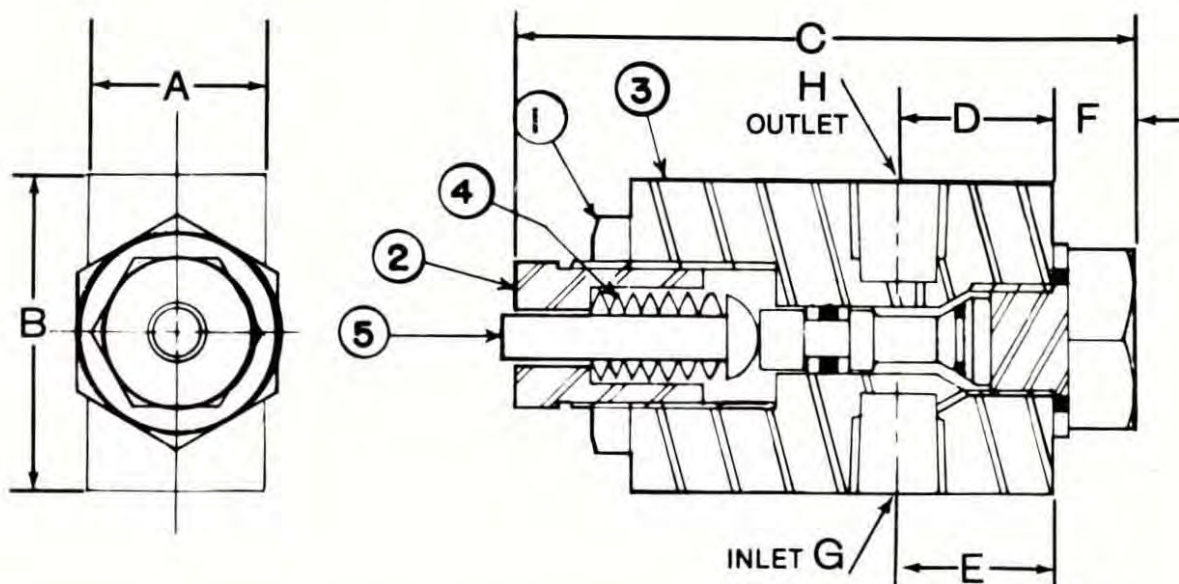
THIS PRESSURE LIMITING VALVE IS EXTREMELY COMPACT, EASILY INSTALLED & MAINTAINED

PART NO.	MAX. WORKING PRESS. (PSI)	SET RANGE (PSI)	STYLE NO.
PLV 5460	12,000	100-800	L
PLV 5460	12,000	800-2500	M
PLV 5460	12,000	2500-10,000	N
PLV 5500	25,000	100-800	L
PLV 5500	25,000	800-2500	M
PLV 5500	25,000	2500-10,000	N
PLV 6430	60,000	100-800	L
PLV 6430	60,000	800-2500	M
PLV 6430	60,000	2500-10,000	N
PLV 6430	60,000	10,000-18,000	O

• AUTOMATIC POSITIVE PROTECTION: • ACCURATE REPEATABLE PERFORMANCE

- New Chemiquip Pressure Limiting Valve with 1/2"-14 NPT or 1/4"-18 NPT inlet & outlet connections.
- It guards against gauge damage resulting from excess pressure.
- The shut-off pressure is adjustable from 100 to 10,000 psi for PLV-5460 & 5500; & 100-18,000 psi for PLV 6430.
- It seals out pressure rises above pre-set value automatically.
- It shuts out instrument line automatically when over pressure occurs.
- It automatically restores instrument line when pressure falls below pre-set values.
- When it is used in conjunction with Chemiquip Snubber, it protects pressure-sensitive instruments from transient line induced surges, pulsations and over pressure.
- The valve is made of 300 series stainless steel.
- The valve is rated from 12,000 to 60,000 psi, depending on models.

CHEMIQUIP PRESSURE LIMITING VALVE



	A	B	C	D	E	F	G	H
PLV 5460	1"	1 3/4"	4"	7/8"	7/8"	3/8"	1/4" NPT	1/4" NPT
PLV 5500	1 1/4"	2 1/4"	4"	7/8"	1"	3/8"	1/2" NPT	1/2" NPT
PLV 6430	2 1/4"	2 1/4"	6 1/2"	2 3/4"	2 3/8"	5/8"	9/16 - 18 NF for 1/4" OD AMINCO	

ADJUSTMENT INSTRUCTIONS

- To increase pressure, back off lock nut (1), rotate adjustment screw (2) clockwise.
- To decrease pressure, rotate adjustment screw (2) counter-clockwise.
- IMPORTANT—For accurate, repeatable results, it is imperative to relieve upstream pressure to less than set-point before manipulating adjustment screw (2).
- When set, tighten lock nut (1). Adjustment range may be altered by removing adjustment screw (2) completely from valve body (3) and adding or removing disc springs (4) as required. Push rod (5) extends through adjustment screw (2) and moves in accordance with pressure changes. By mounting a micro switch at the end of the push rod (5), the switch may be used for electrically controlling the system.

The valve may be assembled with a snubber at inlet for complete pressure and surge or pulsation control. The snubber will also serve to smooth the reaction of the valve to pressure changes, thus avoiding erratic performance by insuring application of pressure at a constant rate. The valve may be assembled at any point or in any position in an instrument system. Adjacency to the instrument is not important to the proper operation of the valve.

TEMPERATURES RANGE:

Minus 40°C (minus 40°F) to 120°C (248°F).
Temperature range is determined by seals which are used in the valve. Special seals are available to order to increase the temperature range.

ACCURACY

Repeatable accuracy of the valve depends on the rate of pressure rise. However, an accuracy of $\pm 10\%$ of the set pressure may be expected.

pressure limiting valve-snubber

Model No. PLV-255 & PLV-2550*

* 316 S.S. - Meets N.A.C.E. MR0175 On Hardness

*For use with
liquids or gases
at operating
pressures
to 8,000 psi*



PLV-2550
(1/2" NPT END CONNECTIONS)

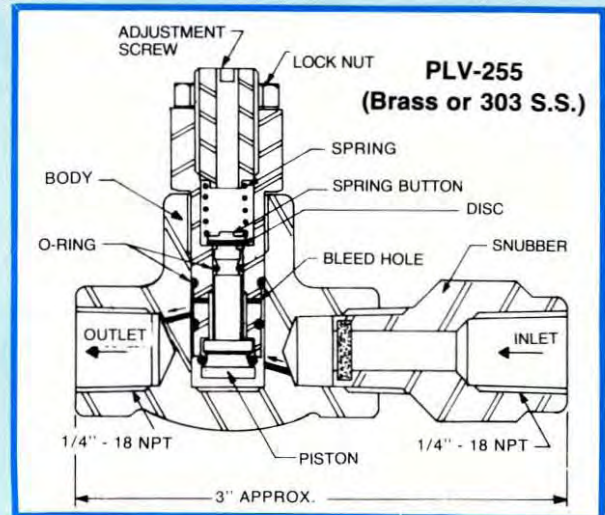
*Achieves new
level of **Automatic**
pressure gauge
protection
—Built-in snubber
enhances valve's
gauge-protecting
performance*

- Available in 4 set ranges: 10-150 psi, 150-500 psi, 500-1,000 psi, 1,000-3000 psi
- Chemiquip snubber assures positive, repeatable performance of valve and gauge — by protecting against surges, pulsations and entrained solids inclusions
- Swift, simple external adjustment
- Entire unit length — 3" (PLV-255) & 4" (PLV-2550)
- Outfitted with 1/4" NPT (PLV-255) or 1/2" NPT (PLV-2550) female inlet and outlet ports

Fabricated of cast brass or Forged Type 300 Series Stainless Steel for PLV-255. For PLV-2550, the valve is fabricated from forged type 316 S.S. which meets N.A.C.E. MR0175. The Valve is readily adjusted by the manipulation of a single external adjusting screw and lock nut. The Valve automatically shuts off pressure to the gauge if the pressure rises above the adjustable pre-set pressure, and automatically restores the instrument on-line when pressure falls below the pre-set value. Allows instruments of different ranges to be connected to a common manifold.

When ordering, please specify:

1. PLV-255S (Stainless Steel) - 1/4" NPT Connections
PLV-255B (Brass) - 1/4" NPT Connections
or
PLV-2550 (316SS) - 1/2" NPT Connections
2. Set Range Required
3. Type of Gas or Liquid in the System



SPECIFICATIONS

Pressure set ranges	Style-3	10-150 psi
	Style-4	150-500 psi
	Style-5	500-1,000 psi
	Style-6	1,000-3,000 psi
Inlet operating pressures		10-8,000 psi Stainless Steel
Minimum burst pressure		15,000psi (brass) 25,000 psi (stainless steel)
Temperature ranges		-15° to 350°F (Viton)* -40° to 250°F (Buna N)
Body material		PLV-255S-300 Series Stainless Steel PLV-2550-316 Stainless Steel
Seal material		Viton or Buna N
Connections (both sides)		1/4" NPT Female (PLV-255) 1/2" NPT Female (PLV-2550)

*It is the customer's responsibility to make sure that the medium is compatible with the Viton or Buna-N O-Rings.